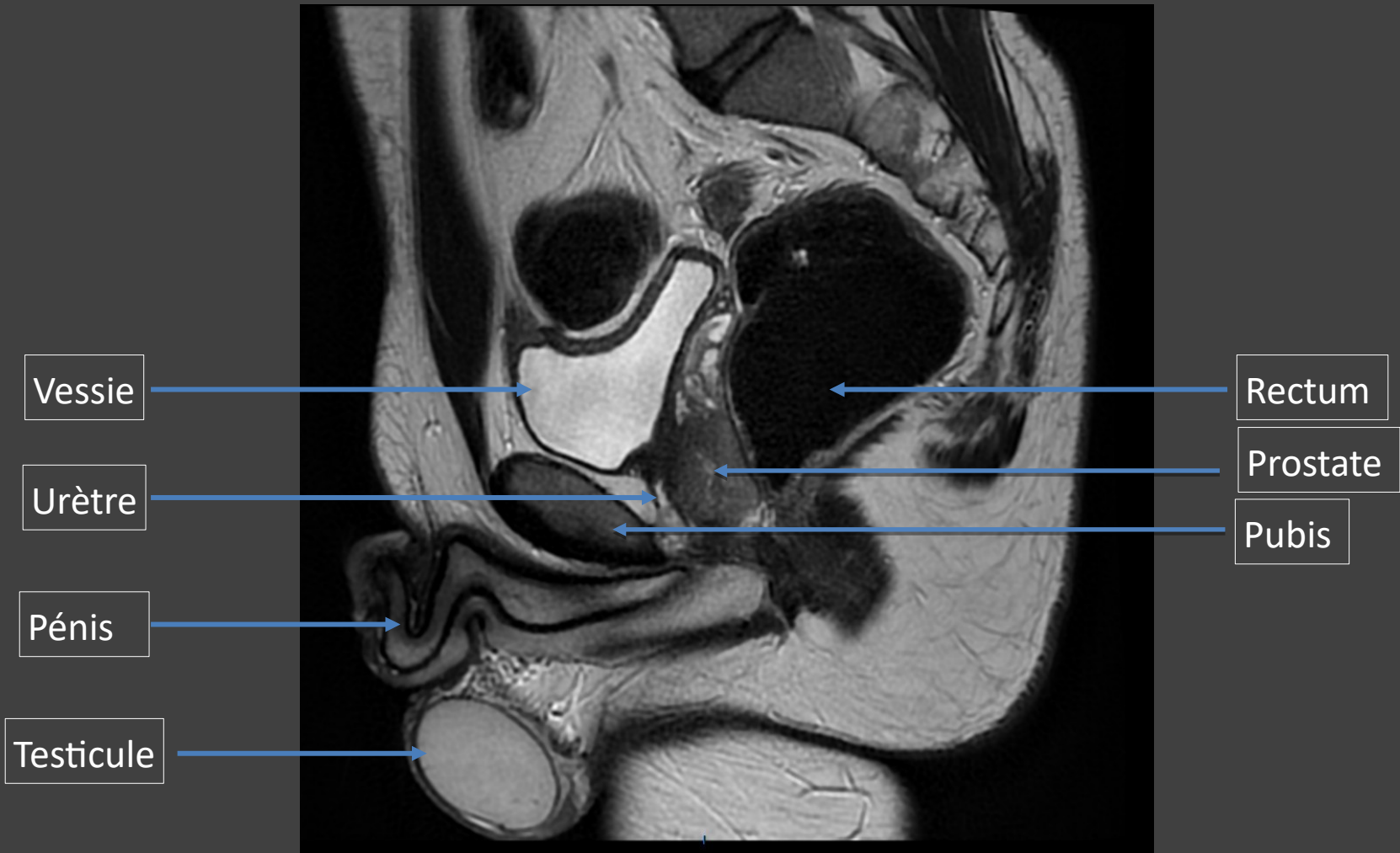


ECN

- Radio anatomie du pelvis masculin
- Etudiantes : Sarah El Yahiaouni, Rahma ELAYEB
- Tuteurs : Asma BEKHOUCHE, Isabelle THOMASSIN

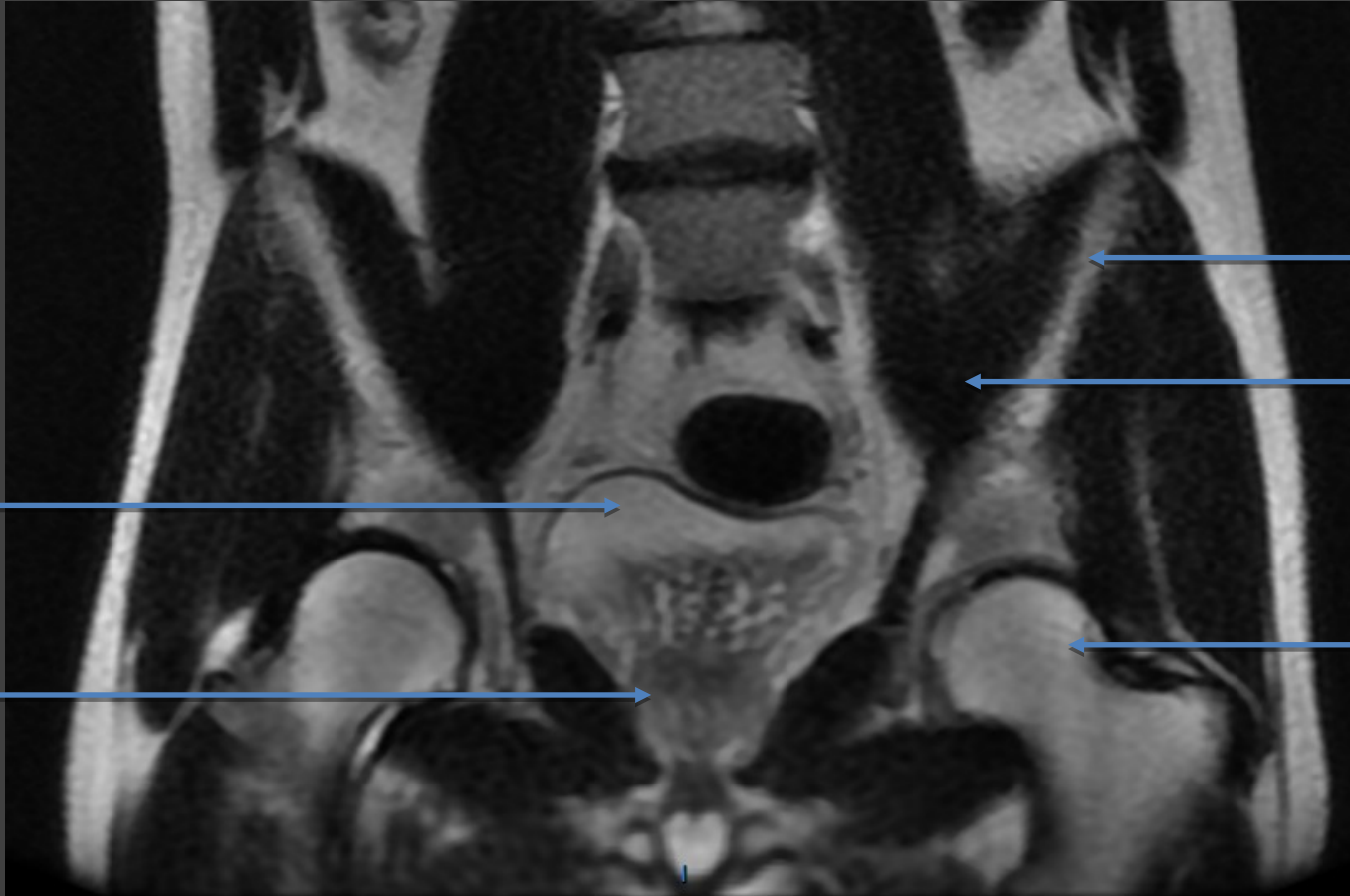
IRM Pelvienne T2

Coupe sagittale



IRM Pelvienne T1

Coupe frontale



Vessie

Prostate

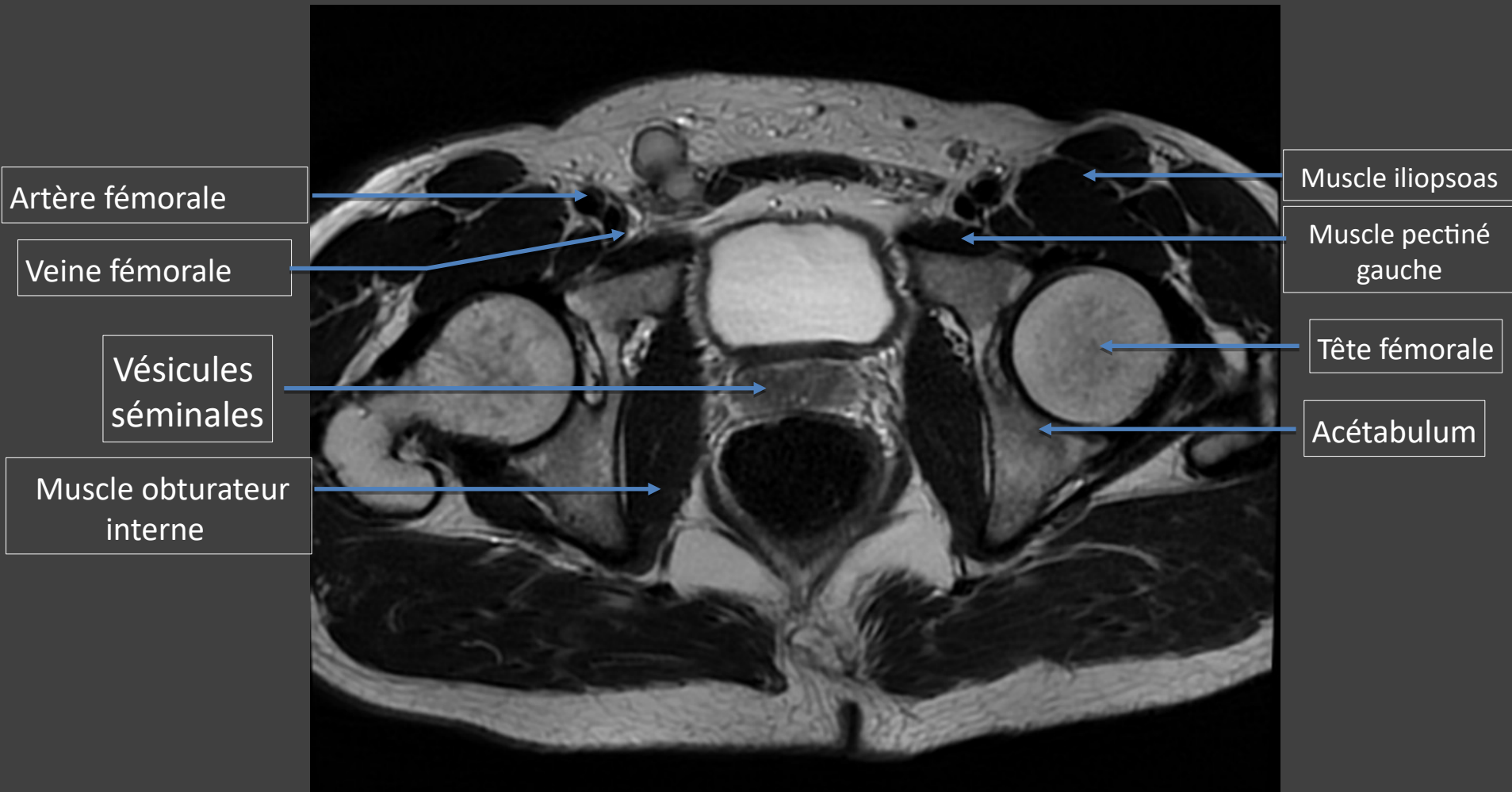
Os
iliaque

Muscle
ilio-psoas

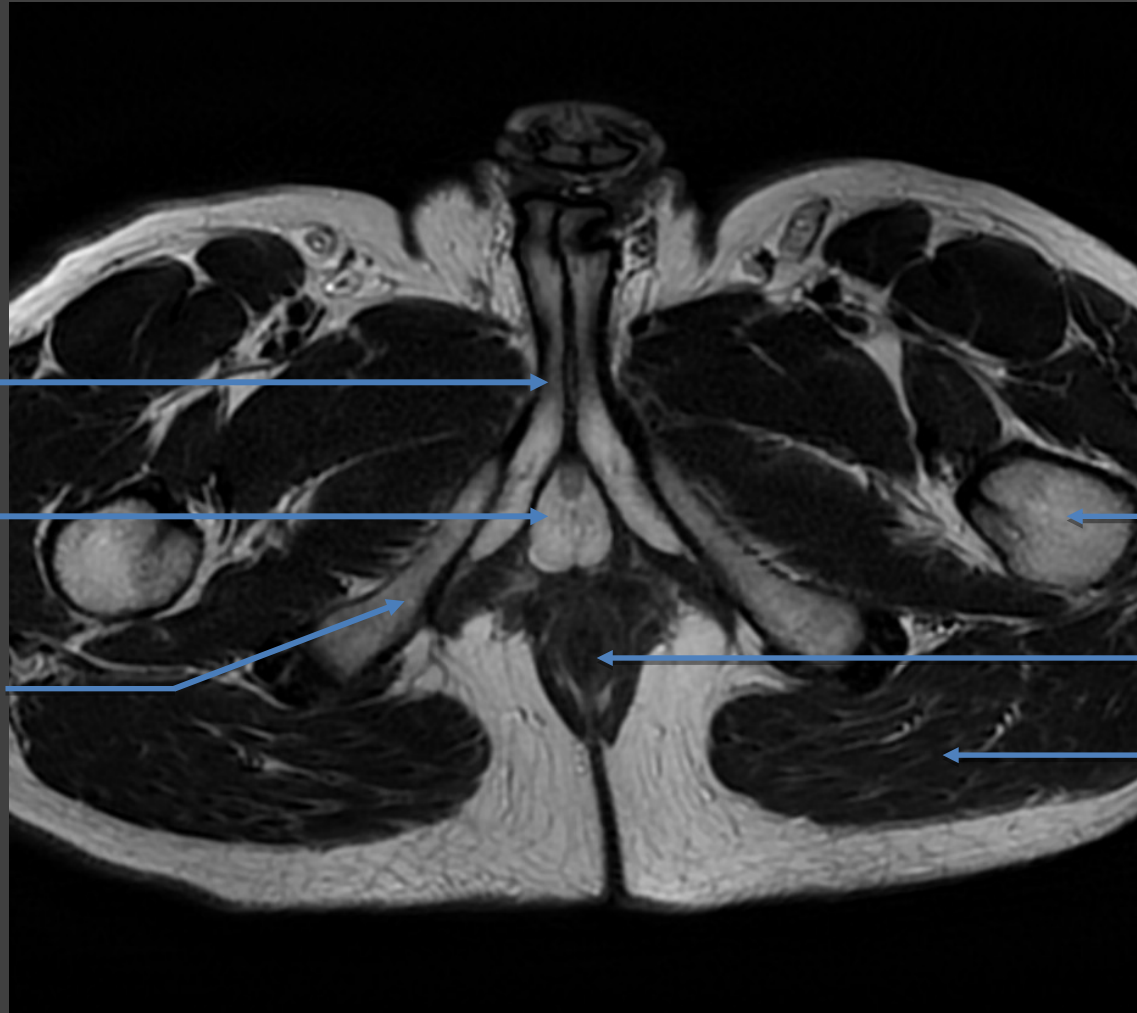
Os
Fémoral

IRM Pelvienne T1

Coupe axiale



IRM Pelvienne T1 Coupe axiale



Corps caverneux

Corps spongieux
(bulbe)

Branche descendante
du pubis

Os fémoral

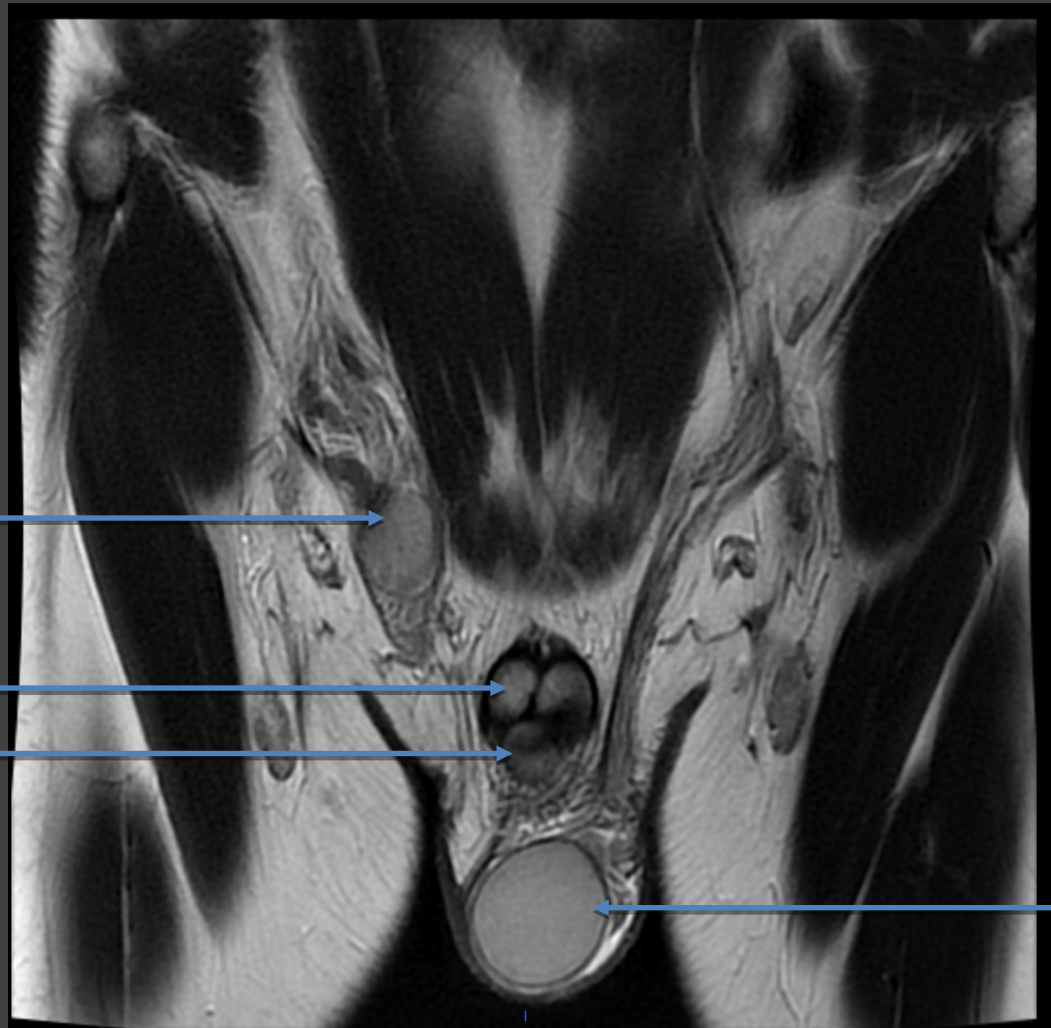
Canal anal

Muscles
glutéaux

IRM Pelvienne T2

Coupe frontale

Testicule ectopique



Testicule droit
(ectopique)

2 Corps caverneux

Corps spongieux
(bulbe)

Testicule gauche